

# D Y PATIL PGDM INSTITUTE AKURDI, PUNE

(Approved by A.I.C.T.E., New Delhi & Recognized by State Govt. of Maharashtra)



## PROSPECTUS | BATCH 2026-28



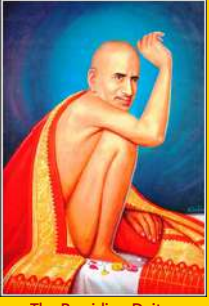
[www.dyppgdm.ac.in](http://www.dyppgdm.ac.in)



[admissionspgdm@dypakurdipune.ac.in](mailto:admissionspgdm@dypakurdipune.ac.in)



Dr. D. Y. Patil Educational Complex, Sector 29, Nigdi Pradhikaran, Akurdi, Pune, 411044.



The Presiding Deity

विद्या नाम नरस्य कीर्तिस्तुला भाग्यक्षये चाश्रयो  
धेनुः कामदुधा रतिश्च विरहे नेनं तृतीयं च सा ।  
सत्कारायतनं कुलस्य महिमा रत्नैर्विना भूषणम्  
तस्मादन्यमुपेक्ष्य सर्वविषयं विद्याधिकारं कुरु ॥



# THE D. Y. PATIL GROUP

**The D. Y. Patil Group** was founded in 1983 by Padmashree Awardee Dr. D. Y. Patil, former Governor of Tripura, West Bengal, & Bihar. The D. Y. Patil Group of Institutions has grown from a vision to provide quality education to rural Maharashtra into one of the state's largest private educational networks. Today, it comprises 3 Deemed Universities, 6 Private Universities, & over 200 institutions, serving 1.5 lakh students with the support of 25,000 faculty & staff across Kolhapur, Pune & Mumbai.

LEADERSHIP  
ANALYTICS  
CORPORATE  
OUTPUT  
PROGRESS  
GUIDANCE  
TEAMWORK  
COMMITMENT



Spread across 33 acres, the Akurdi campus is a dynamic multidisciplinary hub fostering holistic, future-ready education. It hosts premier institutions like D. Y. Patil College of Engineering (Autonomous, NBA & NAAC 'A'), College of Pharmacy (NAAC 'A'), College of Architecture (NAAC 'A'), Y. B. Patil Polytechnic (NBA Accredited), College of Agri-Business Management, DYPIMCAM (NAAC 'A') & the D. Y. Patil PGDM Institute. Together, they offer globally benchmarked programs in Engineering, Management, MCA, Pharmacy, Architecture, Design & Agribusiness. With advanced facilities like the Takshashala Fabrication Lab, the Dnyansagar Innovation Hub & national-level projects such as BAJA SAEINDIA, the campus champions innovation, entrepreneurship & experiential learning. It's modern laboratories & collaborative spaces inspire creativity, leadership & global readiness — shaping professionals who lead with purpose & vision.



# ABOUT US

## ABOUT D. Y. PATIL PGDM INSTITUTE, AKURDI, PUNE

**DYPPGDMI**, based in the Dr. DYPEC, Akurdi, Pune, offers AICTE- & DTE-approved 2-year PGDM programs across eight specializations. With a three-pillar framework spanning curricular, co-curricular & extra-curricular learning, the institute builds industry-ready professionals supported by 100% placement assistance, global exposure through MoU's with universities in Singapore & Malaysia & innovation platforms like Elephant Tank, SILP & the Entrepreneurship Cell.

Backed by expert academic bodies, the curriculum features industry-driven electives including HR Analytics, Digital Marketing, Financial Analytics, Business Analytics, Pharma & Healthcare Analytics & AI in Agritech. Students work with tools like Power BI, Tableau, Google Analytics & JAMOVl & earn certifications in Six Sigma, AI in Management, NSE Finance, CAPM, SAP & more. Campus life includes industrial visits, national & international tours, workshops, cultural events, treks & club activities, shaping globally aware, ethically grounded & practically skilled leaders.

BRINGING IDEAS &  
INNOVATION  
TO LIFE THROUGH  
LEADERSHIP



# OUR LEADERSHIP INSIGHTS



**Padmashree Dr. D. Y. Patil**  
Founder President, The D. Y. Patil Group

Education is the most powerful tool that can transform individuals & society. As you begin your PGDM journey, embrace learning with sincerity, discipline & a spirit of service. Strive not only for professional success but also to become responsible citizens who contribute meaningfully to the world.



**Hon. Dr. Sanjay D Patil**  
President, Dr. D. Y. Patil Pratishthan

The world ahead belongs to learners who are innovative, adaptable & committed to excellence. I encourage you to make the best use of the opportunities offered by our institutions—develop your skills, broaden your perspectives & remain grounded in values that define true leadership.



**Hon. Mr. Tejas Satej Patil**  
Trustee, Dr. D. Y. Patil Pratisthan

You are entering an ecosystem built on academic strength, integrity & social responsibility. As future managers & leaders, let your learning go beyond books - seek real-world exposure, take initiative, & work with dedication. We are committed to providing you a safe, enriching, & empowering environment.



**RAdm. Amit Vikram (Retd)**  
Campus Director, DYPEC, Akurdi

We are committed to grooming professionals who are competent, confident & Industry-ready. As you begin your PGDM journey, remember that discipline, dedication & a willingness to learn will shape your success. Make the most of the resources, mentorship & experiential learning opportunities available to you.



**Dr. Shalaka Parker**  
Director, DYPPGDMI, Akurdi

At the heart of our mission is a commitment to nurture thinkers, innovators & global professionals. Your PGDM journey here will challenge you, inspire you & prepare you for the future. Approach every learning experience with curiosity & courage together, we will shape you into leaders & changemakers of tomorrow.

# OUR REMARKABLE MILESTONE

## OUTLOOK INDIA B-SCHOOL RANKINGS 2025

Since 2024, D. Y. Patil PGDM Institute, Akurdi was proudly ranked **7th among India's Best Emerging B-Schools by Outlook India**. At DYPPGDMI, we shape future leaders through quality education, innovation & a progressive learning environment that inspires excellence & drives growth.



SHAPING LEADERS &  
FUTURES  
THROUGH MANAGEMENT  
EXCELLENCE



## HIGHER EDUCATION REVIEW 2025

Since 2024, DYPPGDMI has been recognized among the **Top 10 Promising Colleges for Entrepreneurship Programs by Higher Education Review 2024**. Featured in the article "Empowering Tomorrow's Entrepreneurs & Innovators," the institute continues to nurture innovation, Entrepreneurial thinking & Leadership excellence among aspiring changemakers.



# VISION

---

To develop Global Business Professionals & Entrepreneurs by means of an Innovative, Research oriented, Technology based & Experiential Pedagogy alongside consistent Industry exposure & Social Immersion Initiatives.

---

# MISSION

---

- 01 Empower Students with inclusive, collaborative & engaging ways of learning.
- 02 To skill Students in the Technological interventions happening in the current Industry.
- 03 To foster a well thought of coalition with Industry & Academia for Research, Innovation & Entrepreneurship
- 04 To imbibe ethical, social & moral values in all our stakeholders & thereby contribute to the growth & development of the Social Norm of the day.



# PROGRAMME OUTCOMES

## **P01 APPLY KNOWLEDGE & SOLVE BUSINESS PROBLEMS**

Students will be able to apply knowledge to identify, analyze & solve real-world business problems.

## **P02 DEMONSTRATE INNOVATION & ENTREPRENEURIAL ABILITY**

Students will be able to demonstrate an innovative mind set & initiate entrepreneurial ventures by developing creative solutions.

## **P03 EXHIBIT CRITICAL, ANALYTICAL & RESEARCH SKILLS**

Students will be able to exhibit critical thinking, analytical skills & research skills to analyse business problems & make decisions.

## **P04 COMMUNICATE EFFECTIVELY & WORK PROFESSIONALLY**

Students will be able to communicate clearly & professionally & collaborate with diverse teams & organizations.

## **P05 USE TECHNOLOGY & DISPLAY DIGITAL AGILITY**

Students will be able to utilize emerging technologies & AI platforms to enhance managerial effectiveness & adapt to evolving business environments.

## **P06 PRACTICE ETHICS, LEADERSHIP & GLOBAL MINDSET**

Students will be able to demonstrate ethical behaviour and responsible leadership & adapt to global business contexts with highest integrity & professionalism.





TRANSFORMING  
CLASSROOMS & CONCEPTS  
INTO CORPORATE SUCCESS  
STORIES.



# PGDM PROGRAM FEATURES



INTERNATIONAL &  
DOMESTIC TOURS



INDUSTRY DRIVEN  
ELECTIVE COURSES



SOCIAL IMMERSION  
PROJECTS



OUTBOUND  
ACTIVITIES



SPORTS DAY  
TOURNAMENTS



CULTURAL FESTS,  
MUSIC NIGHT &  
DANCE EVENTS



INNOVATION &  
ENTREPRENEURSHIP  
CELL ACTIVITIES



INDUSTRIAL VISITS,  
SEMINARS &  
CONFERENCES



INTERNSHIPS WITH  
100% PLACEMENT  
ASSISTANCE



TREKS, YOGA,  
NLP, MEDITATION  
SESSIONS ETC.

# SPECIALIZATIONS OFFERED

**Marketing Management**

Crafting brands, creating impact & mastering the art of persuasion.

**Human Resource Management**

Empowering people, shaping culture & leading organizational growth.

**Financial Management**

Building financial intelligence to drive strategic business decisions.

**Logistics & Supply Chain Management**

Optimizing movement, efficiency & value across global networks.

**Business Analytics**

Turning data into insight & insight into intelligent action.

**Innovation & Entrepreneurship**

Transforming ideas into ventures that redefine the future.

**Agri-Business Management**

Bridging agriculture & enterprise through innovation & sustainability.

**Pharma & Healthcare Management**

Driving excellence in healthcare through strategic business leadership.

# HANDS-ON LEARNING PLATFORM

**NSE FINANCE LAB****SOCIAL IMMERSION LIVE PROJECTS****SUMMER INTERNSHIP PROJECTS****DESIGN THINKING****ROLE OF AI IN MANAGEMENT****NEUROLINGUISTICS PROGRAM****MICROSOFT TOOLS FOR BUSINESS****LANGUAGE TRAINING & SKILL BADGE****PRESENTATION STRATEGIES****CORPORATE GROOMING**

# THREE PILLARS AT DYPPGDMI

Curricular Activities	Co-Curricular Activities	Extra-Curricular Activities
<b>Human Resource</b> <ul style="list-style-type: none"> <li>HR Analytics - Python</li> <li>Analytics Case Studies &amp; Power BI</li> <li>Fundamental - Indian Labour Laws</li> </ul>	<b>Skill Enhancement</b> <ul style="list-style-type: none"> <li>Design Thinking</li> <li>NASSCOM Future Skills</li> <li>Power BI/Advanced Excel</li> <li>Upskill Cambridge</li> <li>Quantitative Aptitude</li> </ul>	<b>Physical Wellness &amp; Fitness</b> <ul style="list-style-type: none"> <li>Sports</li> <li>Yoga Sessions</li> <li>Zumba Sessions</li> <li>Adventure Sports</li> <li>Trekking, Rock climbing</li> </ul>
<b>Marketing</b> <ul style="list-style-type: none"> <li>Digital Marketing Level 1</li> <li>Digital Marketing Level 2</li> <li>Technology Marketing</li> <li>Tech Product &amp; Innovation Marketing</li> </ul>	<b>Industry Exposure</b> <ul style="list-style-type: none"> <li>Industry Readiness Program</li> <li>Industrial Visit &amp; HR Meet</li> <li>Summer Internship Projects</li> <li>Social Immersion Live Project</li> <li>NISM Certification</li> </ul>	<b>Cultural Celebrations</b> <ul style="list-style-type: none"> <li>Cultural Activities Week</li> <li>National Day Celebrations</li> <li>Musical Evening</li> <li>Ethnic Day</li> <li>Talent Showcase</li> </ul>
<b>Finance</b> <ul style="list-style-type: none"> <li>Equity Derivative</li> <li>Research Analyst</li> <li>Financial Modelling</li> </ul>	<b>Cultural Learning</b> <ul style="list-style-type: none"> <li>International &amp; Domestic Tours</li> <li>Domestic Tour on IKS</li> </ul>	<b>Social Responsibility</b> <ul style="list-style-type: none"> <li>Sankalp Saptah</li> <li>Blood Donation Camps</li> <li>CSR Activities</li> </ul>
<b>Logistics &amp; Supply Chain</b> <ul style="list-style-type: none"> <li>Inventory Management</li> <li>Supply Chain Analytics</li> </ul>	<b>Professional Associations</b> <ul style="list-style-type: none"> <li>IIC Activities</li> <li>PMA/ PMI/ ISTD</li> </ul>	<b>Sustainability Initiatives</b> <ul style="list-style-type: none"> <li>Eco-Friendly Drives</li> <li>Green Innovation Projects</li> </ul>
<b>Business Analytics</b> <ul style="list-style-type: none"> <li>SQL &amp; Python</li> <li>Machine Learning</li> </ul>	<b>Academic Engagements</b> <ul style="list-style-type: none"> <li>Seminars/ SHL Assessment</li> <li>Research Analyst</li> </ul>	<b>Expression Platforms</b> <ul style="list-style-type: none"> <li>Cultural Exhibitions</li> <li>Student-Run Publications</li> </ul>
<b>Innovation &amp; Entrepreneurship</b> <ul style="list-style-type: none"> <li>Start Up Pro Program</li> <li>Venture Catalyst Plan</li> </ul>	<b>Competitive Spirit Development</b> <ul style="list-style-type: none"> <li>ET Grandmasters</li> <li>Competitions &amp; Quiz Events</li> </ul>	<b>Student Engagement Programs</b> <ul style="list-style-type: none"> <li>Fresher's Party</li> <li>Outbound Activities</li> </ul>
<b>Pharmaceutical &amp; Healthcare Management</b> <ul style="list-style-type: none"> <li>Pharmacovigilance</li> <li>Medical Coding</li> <li>Healthcare Analysis</li> </ul>	<b>Holistic Development Approach</b> <ul style="list-style-type: none"> <li>Personal Branding Strategy</li> <li>Neuro-Linguistic Programming (NLP)</li> <li>Integrated Skill Building</li> </ul>	<b>Communication &amp; Publication</b> <ul style="list-style-type: none"> <li>Newsletters</li> <li>Magazines</li> <li>Student Blogs &amp; Articles</li> <li>Creative Writing</li> </ul>
<b>Agribusiness Management</b> <ul style="list-style-type: none"> <li>Dairy Management</li> <li>Import &amp; Export Management</li> <li>Role of AI in AgriTech</li> </ul>	<b>Student-Led Initiatives</b> <ul style="list-style-type: none"> <li>Student Council Selection</li> <li>Student Forums &amp; Clubs</li> <li>Student Development Programs</li> </ul>	<b>Leadership Development Programs</b> <ul style="list-style-type: none"> <li>Mindsphere Quiz</li> <li>Simulation-Based Training</li> <li>InnovateX &amp; BizTank</li> </ul>

# ACADEMIC PARTNERS

DYPPGDMI has signed MOUs with leading academic institutions & industries to promote collaboration, research & knowledge exchange. These partnerships provide students with enhanced learning opportunities, industry exposure & pathways for Internships & career growth.



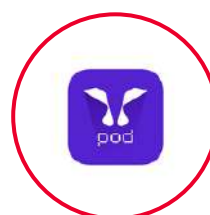
NSE ACADEMY



SMARTBRIDGE



NISM



POD.AI



EDU PLUS NOW



EQUIP9



FASAL AGRO



OM LOGISTICS



JARO EDUCATION



TALENLIO



READY2WORK ASIA



SIILC



GURUJI AIR



IMARTICUS



OPTIMIZED INFOTECH

HABBINSON  
INTERNATIONALDES RANGEELA  
HERITAGEWNS CARES  
FOUNDATIONPUNE MANAGEMENT  
ASSOCIATIONPROJECT MANAGEMENT  
INSTITUTE





# ELIGIBILITY CRITERIA

---

**Are you ready to take the next step? You're eligible if you have**

**Minimum 50% marks in graduation** (45% for reserved categories) from a recognized university, plus a valid score in CAT / MAT / XAT / ATMA / CMAT or MH-CET MBA, any other.

Open to all Bachelor's degrees (e.g. B. Com / BBA / B.A / B.Sc. / BCA / BCS / B.E / B. Tech / B. Pharm, allied science & other eligible degrees).

# SELECTION PROCESS

---

## Application Submission

Apply online or download the application form from our website: [www.dypppgdmi.ac.in](http://www.dypppgdmi.ac.in). Submit the completed form along with an application fee of ₹1000. Payment can be made via Net banking, UPI, or Demand Draft (DD) in favor of D. Y. Patil PGDM Institute, payable at Pune, or through online payment.

## Entrance Test Scores

Candidates applying with scores from national entrance tests (MH-CET, CAT, MAT, XAT, ATMA, CMAT, GMAT) will be invited to participate in the Group Discussion & Personal Interview. The date & venue for GD or PI will be communicated by the Institute.

## Admission Confirmation

To confirm your admission, please pay Rs.75,000 within five days of the Merit List announcement & submit original documents.



# REGISTRATION PROCESS

PGDM Components for Selection	Weightage (%)
Common Entrance - Test Scores (CAT/MAT/XAT/ATMA/CMAT/GMAT/MH-CET)	30%
Academic Performance	15%
Group Discussion or Personal Interview (GD or PI)	50%
Participation in Sports, Extra-Curricular Activities, Academic Diversity & Gender Diversity	05%

## YOUR STEP-BY-STEP ADMISSION JOURNEY

### Step 1: Application Submission

Fill out the application form online at [www.dyppgdm.ac.in](http://www.dyppgdm.ac.in) or download it for offline submission.

### Step 2: GD or PI Counselling

Attend the Group Discussion or Personal Interview. This will be conducted in a hybrid format (Online & Offline).

### Step 3: Results Announcement & Seat Confirmation

The selection results will be communicated via email. Once notified, confirm your admission promptly to secure your seat in the program.

PGDM Program Fee Structure	Amount (₹)
Year 1	₹4,04,254
Year 2	₹3,01,104
Total	₹7,05,358

\* INTERNATIONAL EXPOSURE APPLICABLE

# DIVERSE, DRIVEN, DYNAMIC

## CELEBRATING DIVERSITY, INSPIRING GROWTH

At DYPPGDMI, diversity is our strength & unity is our culture. With students from 14 states, a strong 47% female representation & a growing network of 2,000+ alumni across the globe, we foster an environment where perspectives meet, ideas thrive & leaders are shaped for a global stage.

### Students Across India



13+ STATES

### Regional Cultures



10+



ONE UNITED CAMPUS



120

Batch Intake



47%

Female Enrolment

# PLACEMENT CELL

The **Corporate Relations & Placement Cell at DYPEC, Akurdi**, focuses on building strong connections between the academic community & the business world. Our goal is to align educational programs with industry needs, helping students prepare for successful careers. Through internships, career guidance & campus placement initiatives, we support students in finding the right opportunities. CRPC also serves as a key link for ongoing collaboration between the institute & industry, ensuring students stay connected to evolving professional trends.

## SALIENT FEATURES OF CRPC

- Central Placement Cell
- Corporate Tie-ups & Partnerships
- Internship Opportunities
- Industry-Centric Training Programs
- Specialization Wise Placement Drives
- Corporate Mentorship Programs
- Skill Enhancement Workshops
- International Placement Opportunities
- Continuous Industry Feedback
- Résumé Building & Interview Preparation
- Industry Research & Trend Analysis
- Networking Events & Industry Conclaves



# TALENT HUB CONNECT

*"Our job-ready students are equipped with the skills, knowledge & practical experience that today's workplace demands.*

*Interested in hiring talented, industry-ready post-graduates?  
Connect with us to discuss placement opportunities & help launch the next generation of professionals.*



# INTERNSHIPS & LIVE PROJECTS

## EXPOSURE THROUGH INDUSTRY COLLABORATION



**MR. VIVEK KAVALE**  
BANDHAN AGRITECH



**MR. PRAJWAL SAWANT**  
BANDHAN AGRITECH



**MS. SRISHTI SINHA**  
FORCE MOTORS



**MR. RISHAV CHATTERJEE**  
FORCE MOTORS



**MR. HRUTIK DIWANE**  
FORCE MOTORS



**MR. RUSHIKESH KADAM**  
DEHAAT



**MR. RITESH PAWAR**  
SPARK MINDA & VAST



**MR. SHREYASH AHIRE**  
FASAL



**MR. UNMESH KIRANGE**  
FASAL



**MS. ROHINI WANKAR**  
MUTHOOT FINANCE



**MR. AKSHAY KHADE**  
MULTIVERSITY



**MR. PRITAM MAHALE**  
TAXBLOCK



**MS. PRADNYA KADAM**  
HONDA MOTORS



**MR. RUSHIKESH GHODKE**  
INORVICT HEALTHCARE



**MS. BHAKTI FULSE**  
INORVICT HEALTHCARE



**MS. VAISHNAVI NIGHOT**  
OM LOGISTICS



**MR. AMAR BHILLARE**  
OM LOGISTICS



**MR. YASH AMBULKAR**  
SUMAX ENTERPRISES



**MR. SUSHIL DHULSHETTE**  
GK BIOSCIENCES



**MS. ANKITA CHIDRE**  
INFRA SPACE HEALTH

# CAMPUS PLACEMENTS

Hiring  
Partners

100+

Corporate  
Tie-ups

30+

Industry  
Domains

10+

Repeat  
Recruiters

70%

## OUR PROUD STUDENTS PLACED IN TOP REPUTED COMPANIES



**MS. GAYATRI BORSE**  
HYOSUNG T&D INDIA PVT LTD



**MR. OMKAR JAGTAP**  
BIOERA



**MR. SANSKAR SANCHETI**  
ANUDIP FOUNDATION



**MR. BABLU YADAV**  
EVEREADY INDUSTRIES



**MR. YOGESHWAR YADAV**  
EVEREADY INDUSTRIES



**MR. KRISHNA SHELKE**  
DTDC



**MR. AVADHOOT BORADE**  
SUDARAM FINANCE LTD.



**MR. OM BHAVSAR**  
ANUDIP FOUNDATION



**MR. RUSHIKESH HINGNE**  
BNY MELLON



**MS. RADHA KUMARI**  
HDFC SALES



**MR. ROHIT GADGE**  
FASAL



**MR. PANKAJ FURANGE**  
FASAL



**MR. KUNAL PATIL**  
ACADEMOR EDUTECH



**MR. DIVYA KUMAR**  
LAUNCHED GLOBAL



**MS. DISHA BHAJBHUJE**  
LAUNCHED GLOBAL

# ELITE RECRUITERS



## PROUDLY PLACED WITH LEADING COMPANIES

Specialization	Company	Package Offered (LPA)
Finance	BNY Mellon	10.2
Operations & Marketing	AI Maya International LLC (OMAN)	9.5
Marketing	Intellipat	9
Marketing	Teach Nook	9
Finance	Johnson Controls	8.5
Marketing	Godrej & Boyce	8
Marketing	Property Cloud	7.1
Logistics & Supply Chain	Flipkart	7
Finance	Wiley	7
Human Resource	Equip 9	5.5
Agri Business Management	Fasal	5.5



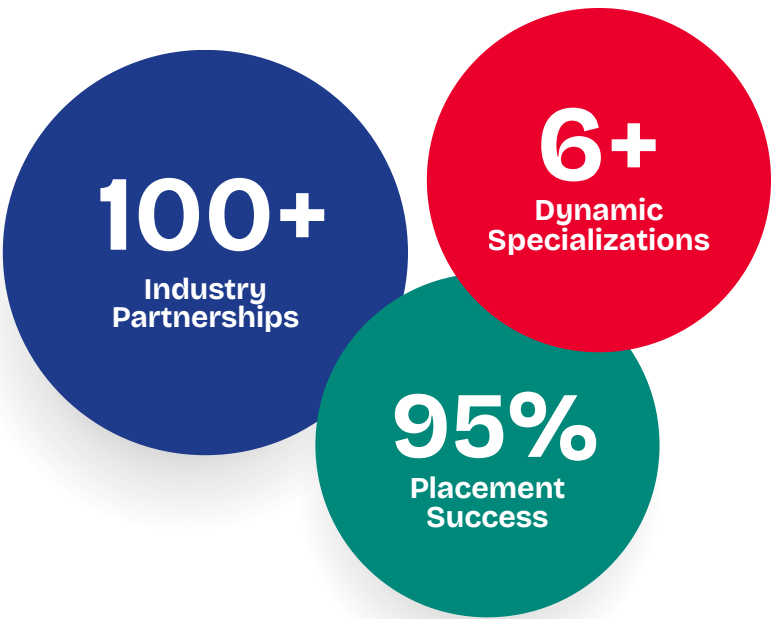
# DYPPGDMI AT A GLANCE

## CORPORATE PARTNERSHIPS

160+

## INDUSTRY EXPOSURE

85%



●  
MOUs, Guest lectures  
& Live projects

●  
Within 3 months of  
Post-graduation

●  
Marketing, Finance,  
HR, Logistics, Pharma  
& Agri Business

## INSTITUTIONAL STRENGTH AT A GLANCE

Qualified  
Faculty

95%

Faculty-Student  
Ratio

1 : 20

Board  
Members

15+

Guest  
Speakers

30+

Faculty  
& Staff

25+

Visiting  
Faculty

13+

MoUs  
Signed

20+

Research  
Initiatives

10+



# CURRICULAR ACTIVITIES

## ACADEMIC FOUNDATION FOR INDUSTRY EXCELLENCE

These core academic elements build subject expertise through classes, industry-focused electives, case studies, tool training & certifications, strengthening concepts, analytical skills & practical application.



# CO-CURRICULAR ACTIVITIES

## APPLIED LEARNING FOR REAL-WORLD READINESS

These activities extend learning beyond the classroom through workshops, industrial visits, guest sessions, tours & innovation programs, building problem-solving, teamwork & industry readiness.





# EXTRA CURRICULAR ACTIVITIES

## HOLISTIC GROWTH BEYOND THE CLASSROOM

These activities support overall growth through sports, cultural events, treks, yoga, NLP, clubs & community engagement, enhancing confidence, wellness & interpersonal skills.





# CAMPUS & INFRASTRUCTURE

## BUILT FOR LEARNING, COLLABORATION & SUCCESS

Spread across 33 acres, the Akurdi campus offers a vibrant, multidisciplinary environment that blends learning with innovation. Home to leading D. Y. Patil institutions across Engineering, Management, Pharmacy, Architecture & more.



# INDUCTION CEREMONY 2K25

## WELCOMING THE NEXT GENERATION OF LEADERS

The Induction Ceremony 2k25 welcomes bright minds to a new academic journey. It marks the start of learning, growth & endless possibilities. A step toward shaping future leaders ready to make an impact.





# WELCOME PARTY 2K25

## CELEBRATING NEW BEGINNINGS WITH JOY & TOGETHERNESS

The Welcome Party 2k25 celebrates joy, unity & fresh beginnings. It's where new bonds form; memories are created & the campus spirit truly comes alive. A night to remember & cherish forever.



# HR INNOVATE 2K25

## SHAPING PEOPLE. POWERING FUTURES.

A future-forward human capital showcase engineered to spotlight next-gen HR strategies, talent excellence, and culture transformation. The event drives high-impact collaboration & empowers institutions to elevate workforce innovation.





# ACADEMIC & GUEST LECTURES

## LEARNING FROM EXPERTS, INSPIRING FUTURE LEADERS

These lectures bring industry experts & thought leaders to the classroom. They inspire students with real-world insights, innovative ideas & professional wisdom. Each session ignites curiosity & builds a foundation for future leadership.





# INDUSTRIAL VISITS

## INSIGHTS FROM THE FIELD TO SHAPE YOUR FUTURE

Industrial Visits offer students a firsthand experience of real-world operations & industry practices, providing practical insights, enhancing understanding & bridge the gap between theory & practice, inspiring Innovation & Leadership

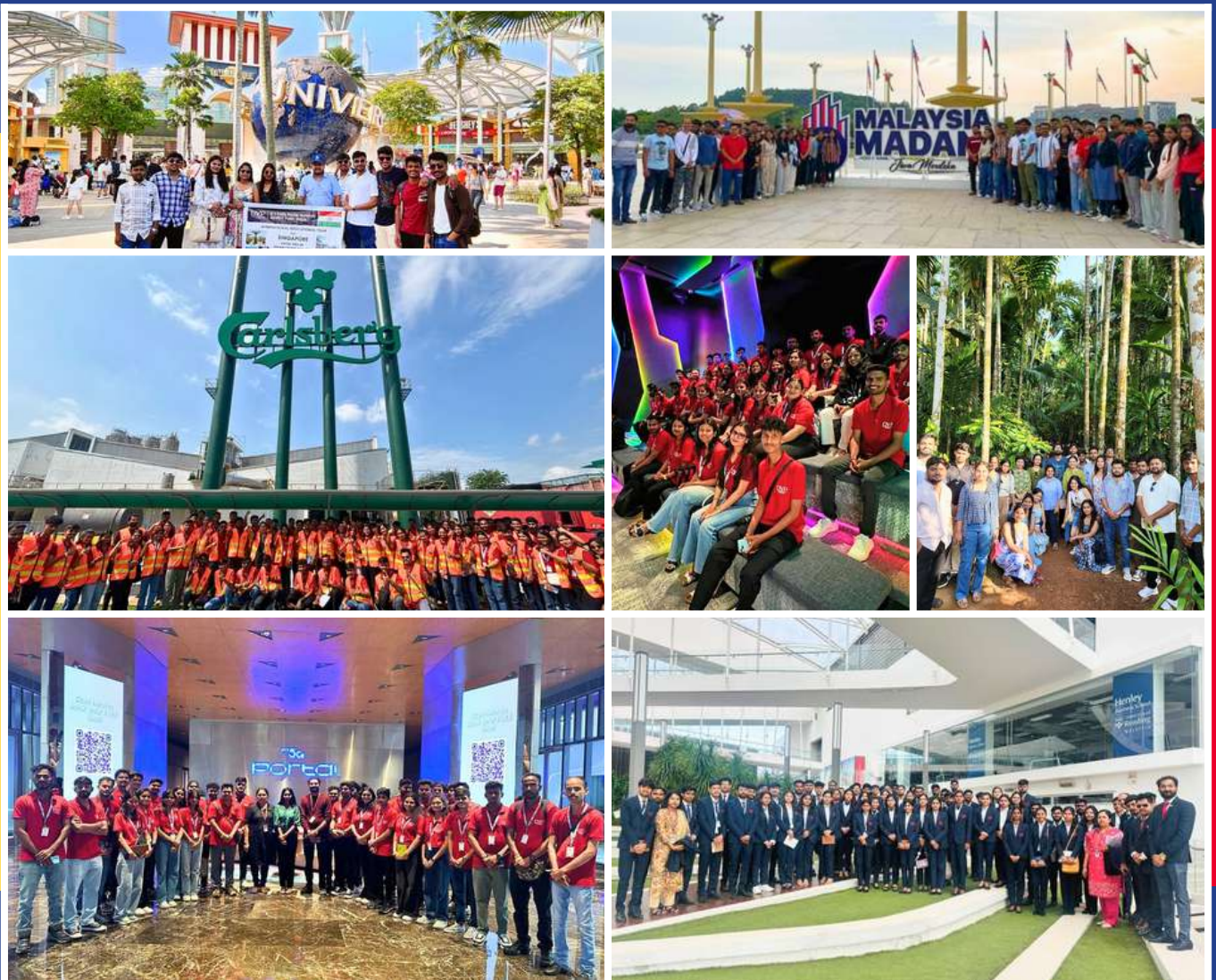




# GLOBAL & DOMESTIC TOURS

## EXPERIENCING CULTURES, EXPANDING HORIZONS

Tours give students the opportunity to explore diverse Cultures & Markets. They broaden perspectives, foster learning beyond the classroom & create unforgettable experiences. Every journey enriches knowledge & inspires a global outlook.





# CULTURAL & TRADITIONAL DAY

## CELEBRATING HERITAGE, UNITY & DIVERSITY

Cultural & Traditional Day celebrates the rich heritage & vibrant traditions of our community. It brings students together to honor diversity, showcase talents & foster unity. A joyful occasion to embrace culture & create lasting memories.





# OUTBOUND ACTIVITIES 2K25

## ADVENTURE, COLLABORATION & GROWTH

Outbound Activities 2k25 combine adventure, teamwork & personal growth. Students engage in challenges that build leadership, collaboration & resilience. A dynamic experience that strengthens bonds & develops skills beyond the classroom.





# SPORTS & YOGA DAY

## PROMOTING FITNESS, FOCUS & TEAM SPIRIT

Sports & Yoga Day encourages physical fitness, mental well-being & teamwork. Students participate in activities that boost energy, focus & camaraderie. A day dedicated to health, harmony & holistic growth.





# CSR INITIATIVES & ACTIVITIES

## DRIVING SOCIAL CHANGE THROUGH MEANINGFUL ACTIONS

CSR Initiatives & Activities empower students to contribute to society through impactful projects. They foster empathy, responsibility & community engagement. A platform to drive positive change & make a meaningful difference.





# D Y PATIL RESIDENCY

## COMFORT, COMMUNITY & CONVENIENCE

Standing tall at 100 meters with 32 floors, our hostel is as grand as it gets in Pune, a beacon of modern living & comfort. Enjoy hot, piping fresh food just steps away within the campus, with rooftop dining that offers a breathtaking aerial view of Pune.





# CONTACT US



## WE'RE HERE TO ASSIST YOU

Get in touch with our highly qualified & skilled admission coordinators for personalised guidance & support. Shape your future with confidence — **Your dream career is just a call away.**

### WEBSITE

[www.dyppgdm.ac.in](http://www.dyppgdm.ac.in)

### EMAIL

[admissionspgdm@dypakurdipune.ac.in](mailto:admissionspgdm@dypakurdipune.ac.in)

[placements@dyppgdm.ac.in](mailto:placements@dyppgdm.ac.in)

### ADDRESS

Dr. D. Y. Patil Educational Complex, Sector 29,  
Nigdi Pradhikaran, Akurdi, Pune, 411044.

### ADMISSIONS & ENROLLMENT

Prof. Kalpesh Kuwar	-	8999607931
Prof. Atik Bijapure	-	9403722167
Ms. Renu Paithane	-	8655212073
Mr. Pratik Ise	-	7276757931
Ms. Vaishnavi Banait	-	9370299518

